

# Membership Report

**Annual General Meeting**

**February 2019**



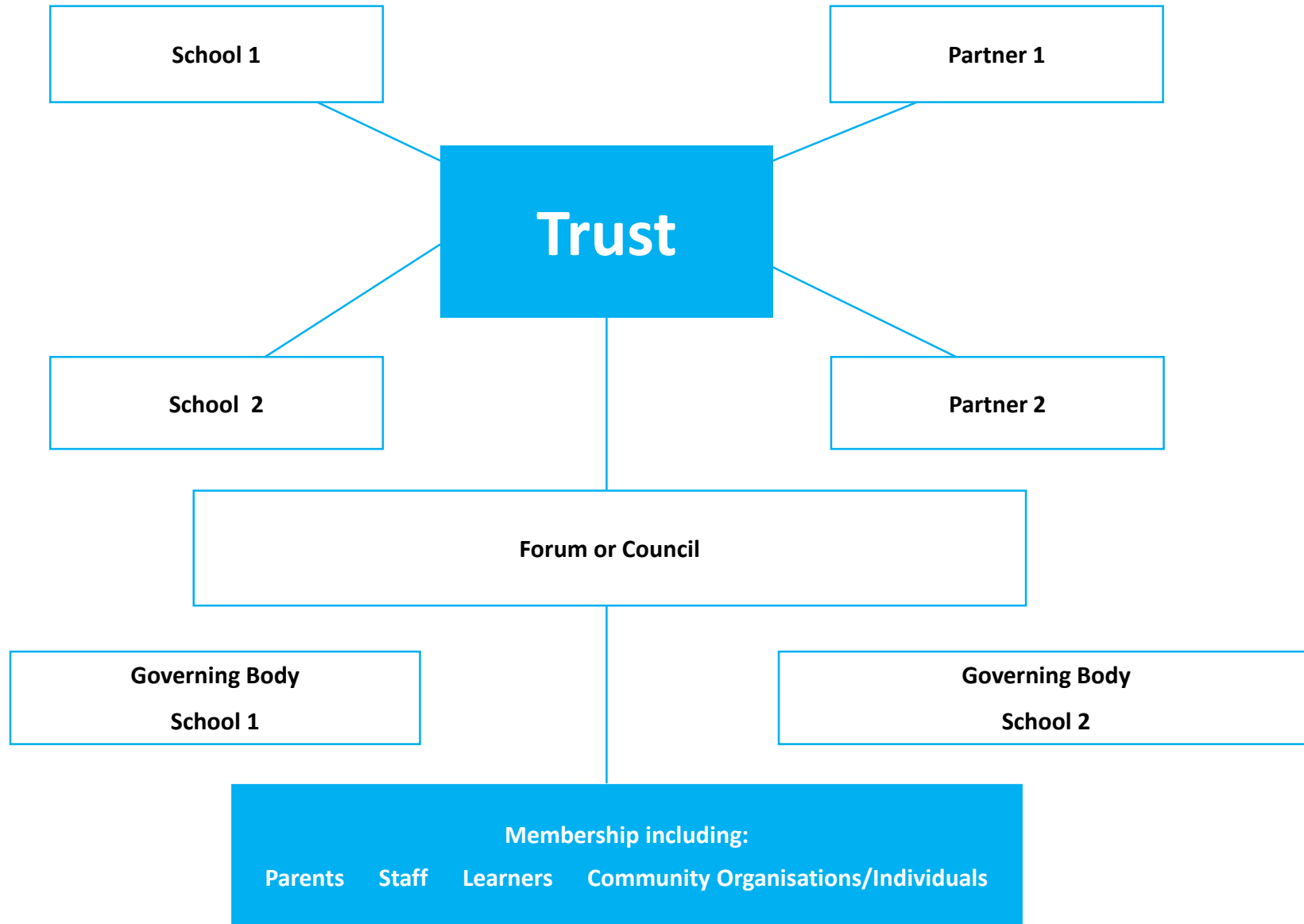
# What Do We Mean By Membership?

You can not be a co-operative Trust without members. A co-operative schools' Trust can not meet its legal requirements for holding meetings, filing accounts and reporting to Companies House and the Charity Commission without having a membership. So recruiting and maintaining a membership base is a core activity.

Members from the constituency groups have a vested interest in the development and performance of the schools so their participation can support the developments and priorities the Trust has set.

Co-operatives need active members to guide their co-operative to participate in the democratic process to ensure they are focusing on the needs of their members. Members can be a source of ideas and innovation for the Trust.

Members provide a link between their co-operative and the community.



The membership is usually made up of people who live and work in the community served by the Trust and its schools and as such it places the community at the heart of everything done by the schools and the Trust.

They can be tremendous advocates for the schools and developing a strategy to analyse the needs of each stakeholder group and identify meaningful way to engage with these group.

## **Constituent Groups**

- Learners
- Parents/carers
- Staff
- Local community organisations
- Other organisations
- (Alumni)

# Key Responsibilities

- Receive the annual accounts prior to filing
- Receive the annual directors' statement prior to legal filing
- Hold Trustees/Directors to account
- Propose and vote on resolutions
- Elect representatives to the Stakeholder Forum
- Support the Trust at events, represent the community

# To Date ...

Agreement that all staff, parent/carers, learners and governors of the nine schools are members of the Trust

Membership is free

Different levels of membership

- **Level 1:** Keep me informed via newsletters and websites
- **Level 2:** Contribute through questionnaire etc
- **Level 3:** Participate:
- Friends of Dovestone Learning Partnership.

Recent marketing to attract more community members

**Come and Join our Trust**

**We want you at the heart of our  
Partnership**

**Come and get involved with an  
enthusiastic and dynamic group**

# School Members

Members can not be in more than one category

School	Staff	Parents/Carers	Learners	Governors/ Community
Christ Church	22	192	96	4
Delph	30	400	201	5
Diggle	32	272	173	5
Friezland	20	210	108	3
Knowsley	45	706	353	4
Saddleworth	140	2000	1380	5
St Agnes	15	200	105	7
St Marys, Greenfield	39	419	211	6
St Thomas, Leesfield	30	400	210	7



- If you would like to become a member please complete the form or contact school
- Any queries about membership please contact the head teacher or Julie Bowdidge on 07515257389 or [juliebowdidge@googlemail.com](mailto:juliebowdidge@googlemail.com)
- Help us by passing the information onto organisations or individuals you feel may be interested in being involved.
- Thank you for your support